

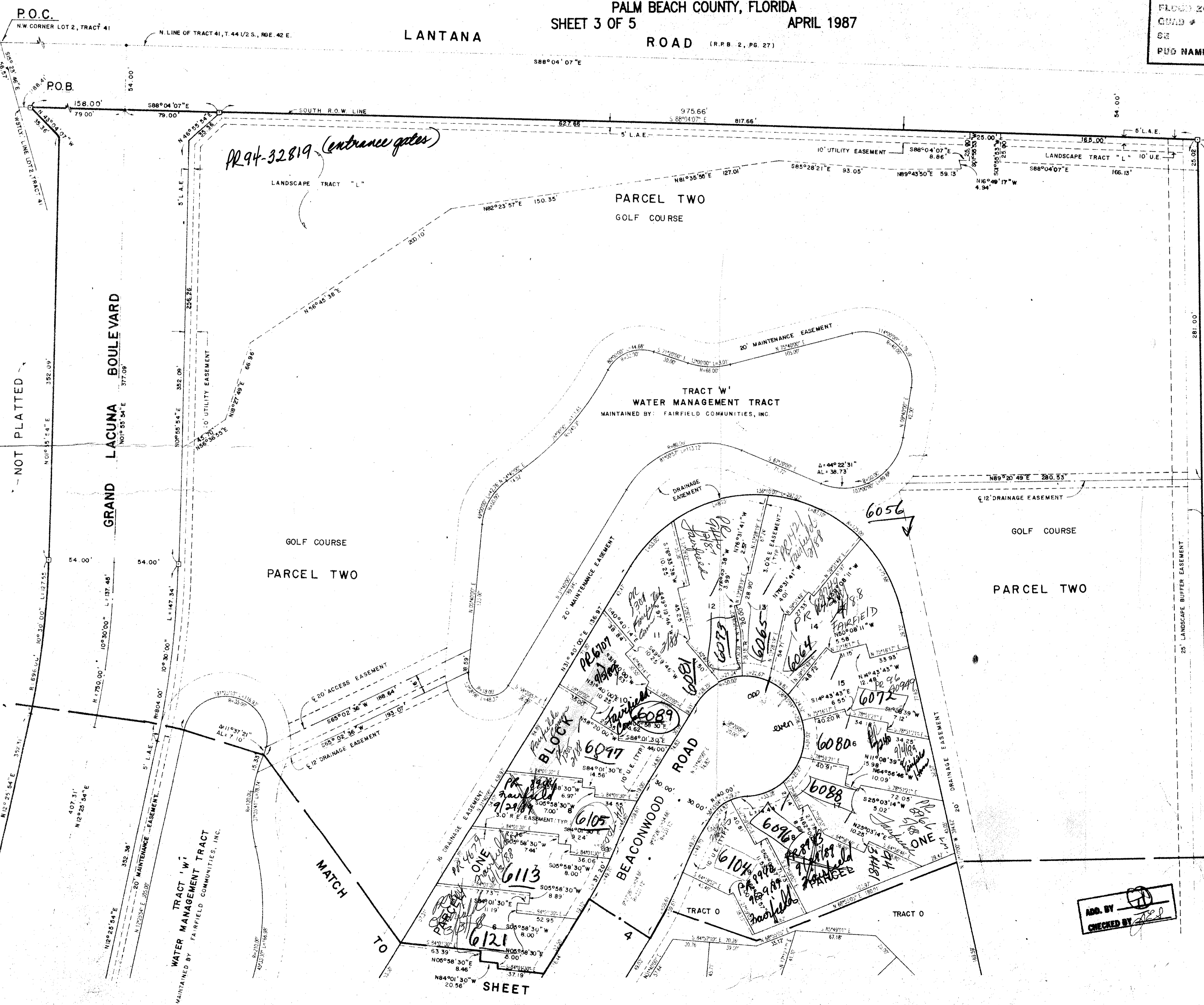
FAIRFIELD'S LACUNA PLAT 3

A PART OF BALMORAL COUNTRY CLUB P.U.D.
PALM BEACH COUNTY, FLORIDA
SHEET 3 OF 5 APRIL 1987

Subdiv / 44/42
SUBDIVISION *Fairfield Lacuna*
BOOK 50 PAGE 107
FLOOD ZONE B
CADD # 48
SE
PUD NAME *Plot 3*

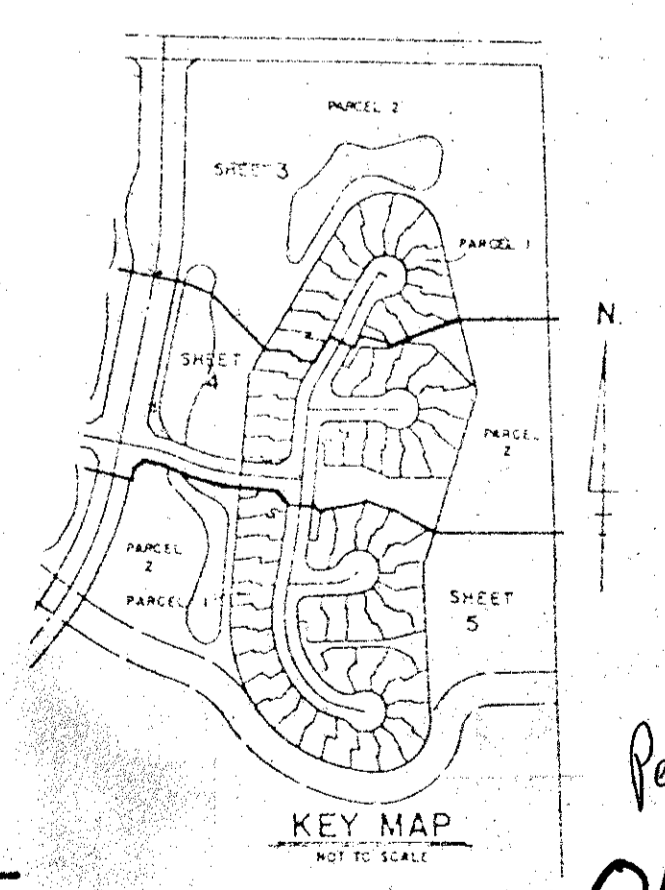
107

STATE OF FLORIDA
COUNTY OF PALM BEACH
This Plat was filed for record at
M. this _____ day of _____ 19____
and duly recorded in Plat Book No. _____
on Page _____
John B. Dunkle, Clerk Circuit Court
By _____ D.C.



95' R/W FOR CANAL E-2W (O.R.B. 319, PG. 275)

GRAPHIC SCALE 1"=40'



ADD. BY [Signature]
CHECKED BY [Signature]

Pet. 81-233
0199-003

56/107

Landmark Surveying & Mapping Inc.
1350 FOREST HILL BLVD.
PALM BEACH, FLORIDA 33410
TEL. (407) 833-8400 FAX (407) 833-8400

FAIRFIELD'S LACUNA PLAT 3

PLAN HOLD CORPORATION • IRVINE, CALIFORNIA
RECORDED BY NUMBER 07549